

LC Optical Loopback

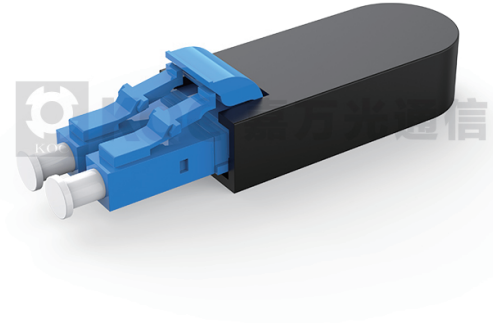
Optical loop back is used to test the signal backtransmission in the system or network system, and can detect various potential anomalies in the network link through the backtransmission signal. This detection is widely used and provides an effective detection method to ensure the normal network link.

Features

- Single mode or Multi mode can be chosen
- PC or APC can be chosen
- Housing packing Size (35x14.5x8.4mm or 16.2x12.5x6.2mm) can be chosen
- Good interchangeability and pluggability
- ROHS Compliant
- Loop back cable for many test applications

Application

- FTTH application
- Various test equipment
- Data processing networks
- Wide Area Networks (WANs)
- LANS
- System debugging



Item	Single mode	Multi mode
Insertion Loss	≤1.0dB	≤0.6dB
Return Loss	APC≥60dB, PC≥50dB	PC≥30dB
Repeatability	≤0.2dB	
Durability	≤0.2dB typical change, 1000 matings	
Operating Temperature	-20°C ~ 70°C	
Storage Temperature	- 40 ~ +85°C	
Housing packing size	35x14.5x8.4mm	
	16.2x12.5x6.2mm	

