

## LC Duplex SC Footprint Style Adapter

### Description

Fiber optic adapter is to achieve the same or different optical fiber connectors docking in optical links, make the light path connected under the small loss. It is to put the fiber of two surface precision docking, so that the optical output of light energy to the maximum coupling in the receiving optical fiber, and since it entered the optical link to minimize the effects on the system. Widely used in optical fiber distribution frame (ODF), fiber optic communications equipment, instruments, etc., superior performance, stable and reliable.

### Application

- CATV
- Telecommunication networks
- Local Area Networks (LANs)
- Data processing networks
- Test equipment
- Premise installations
- Gigabit Ethernet
- Video

### Features

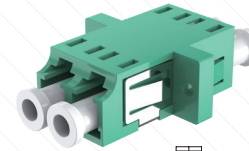
- Low insertion loss and back reflection loss
- High precision alignment
- Compact design
- Plastic housing
- Telcordia, ANSI, TIA/EIA, NTT and JIS compliance

### Specification

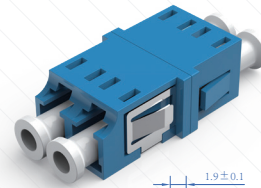
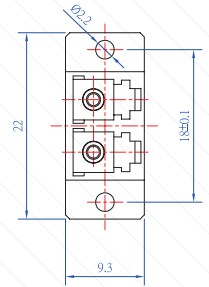
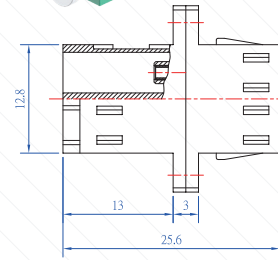
Item	Specification
Insertion Loss	<0.20dB
Durability	<0.20dB typical change, 1000 matings
Operating Temperature	-40 ~ 85°C

### Availability

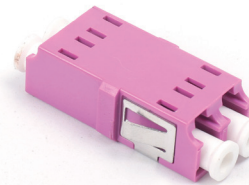
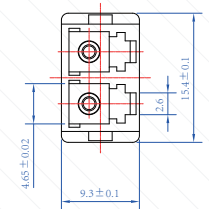
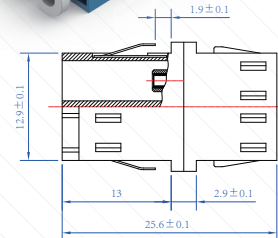
Flange Type	Type	Welded Type	Housing Color
Flange	Symmetric	One Piece Adapter	SM/PC - Blue
No Flange	Asymmetric	Conventional Adapter	SM/APC - Green
			MM/PC - Beige/Aqua/Magenta/Black



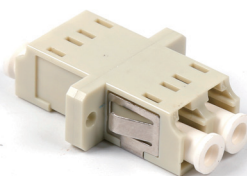
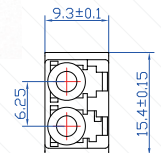
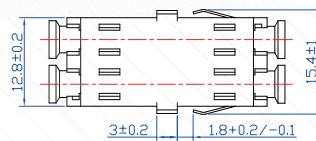
Asymmetric, with flange  
One Piece Adapter



Asymmetric, no flange  
Conventional Adapter



Symmetric, no flange  
One Piece Adapter



Symmetric, with flange  
Conventional Adapter

